

AURORA Technologies Ltd.

P.O. Box 388, Tirat Carmel 30200, Israel
Tel.: (972) 4-8576982, FAX: (972) 4-8576983

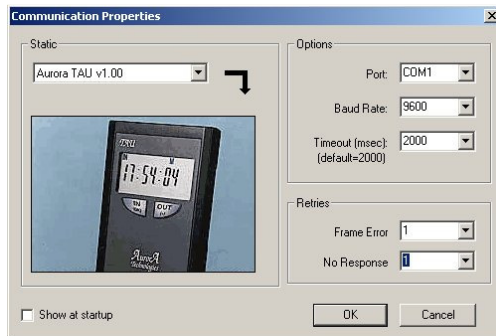
email: rongal@aurora.co.il

email: didia@aurora.co.il

TAU - Quick start guide

1. When using the USB to Serial (COM port) converter, please install the serial converter software driver first, as described in appendix A.
2. Software Installation (setup) from CD.
3. Connect TAU cable between PC and TAU unit.

4. To connect the TAU to PC Press few times the IN button on TAU unit until the TAU Display “PC Control”, indicates communication link.
5. On the PC, create a folder for TAU data files. The TAU application software will use this folder for all data files.
6. Run the TAU software “*TAUCommEng.exe*”. During the first software session, the communication properties window displayed will be:



Select the appropriate COM port, according to the port connection of the TAU unit (or serial converter).

7. Associate the folder created to TAU software: From menu “Files” → “Data Folder...” Select data folder created in step 5.
8. Test communication with TAU unit. From “Tools” Menu select “Unit data & time”. Press “Read” and test communication success.
9. Create and update the TAU parameters: From “Units” Menu select “Unit list” and “Add” unit. If more than one TAU Unit exists create the second one and so on.
10. Create the employees: From “Employees” Menu select “Employees list” and “Add”. Update all data on the employee window, Inset Smart card in TAU and press “Write” to write the information to Card.

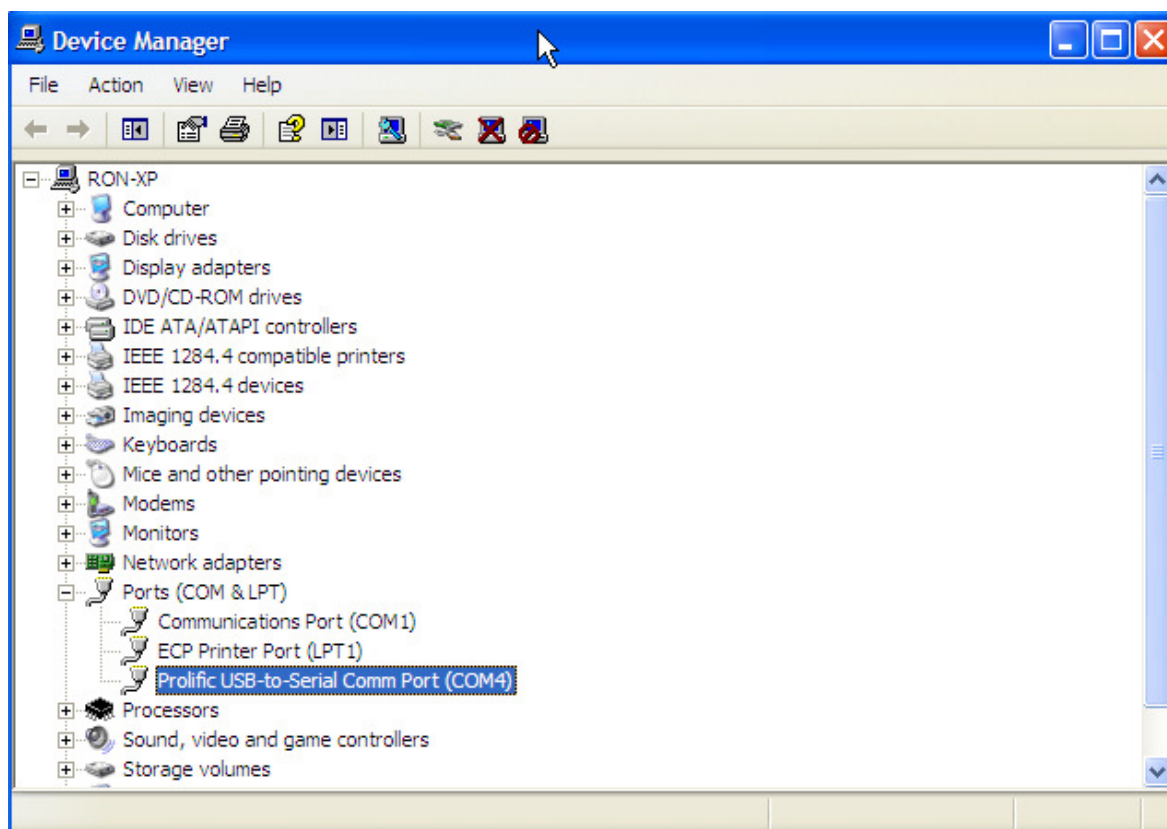
Appendix A

Setup of the USB to serial converter interface of type "USB to RS232".

Do not connect the interface cable USB to serial before drivers' installation.

1. Driver installation for Windows XP Pro.

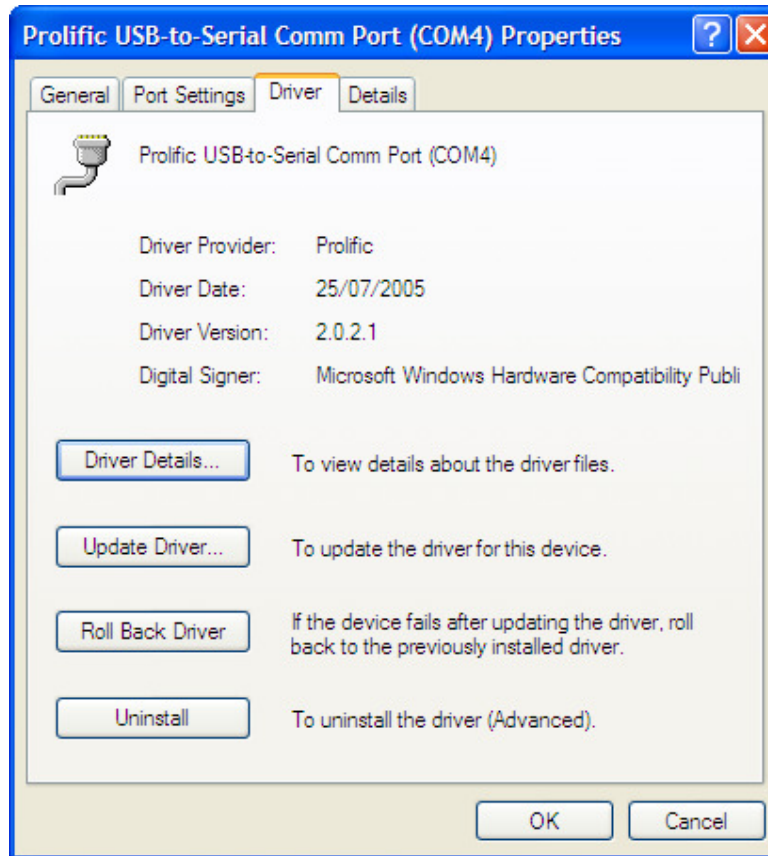
- 1.1 Install the converter drivers by running the Setup:
PL2303_Prolific_DriverInstaller_v130.exe.
- 1.2 Follow the software instructions:
- 1.3 Connect the cable USB to serial converter of type "USB to RS232".
The computer must recognize the new device.
- 1.4 Please verify the correct installations of the drivers:
- 1.5 Open the Control Panel → System → Hardware → Device manager → Ports (COM & LPT)
The Setup should have created a new COMx port named Prolific USB-to-Serial Comm Port (COMx), where x is the new port number, and the new COM port is not painted in a Yellow color.



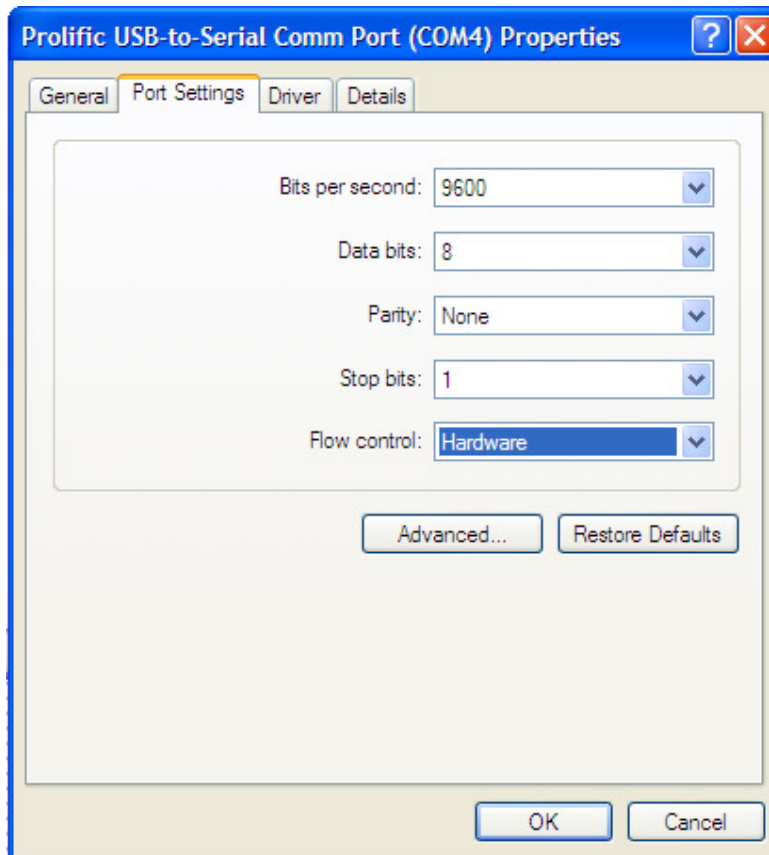
- 1.6 Verify the properties of the newly installed driver. Double click on the Prolific... line, then select the Driver tab:

Driver Provider Prolific

Driver Version 2.0.13.130



- 1.7 Open the Port Settings tab.
Set the Flow control to: Hardware.
Click on the OK button.

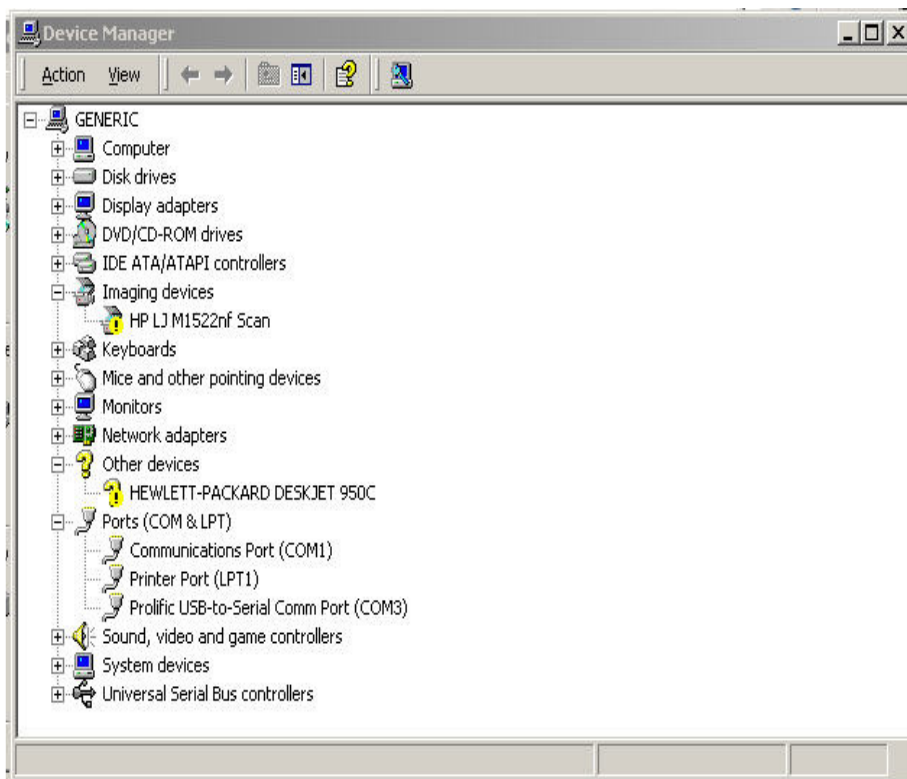


- 1.8 Apply the COM port number to the TAU setup software (Communication port settings) in step 6.

2. Driver installation for Windows 2000.

- 2.1 Install the converter drivers by running the Setup:
PL2303_Prolific_DriverInstaller_v130.exe.
- 2.2 Follow the software instructions.
- 2.3 Connect the cable USB to serial converter of type "USB to RS232".
The computer must recognize the new device.
- 2.4 Please verify the correct installations of the drivers:
Open the Control Panel:

Start → Settings → Control Panel → System → Hardware → Device
Manager



The Setup should have created a new COMx port named Prolific USB-to-Serial Comm Port (COMx), where x is the new port number, and the new COM port is not painted in a Yellow color.

In this example: Prolific USB-to-Serial Comm Port (COM3) was created.

1.6 Verify the properties of the driver

Driver Provider: Prolific
Version: 2.0.13.130



Using Port Settings tab, set the Flow control to: Hardware.

- 1.7 Apply the COM port number to the TAU setup software (Communication port settings) in step 6.